



Configuration

ToolACE

Pilot

ACE Pilot is the 'indispensable configuration and programming tool that allows you all the flexibility you need to configure and manage your Itron DLMS meters (ACE4000, ACE6000, ACE SL7000, ACE8000). Easy to use, this Software allows you to configure your Itron meters and read locally and remotely the measurements and other information they collect and record, making point-to-point monitoring of the meters possible.

Based on Itron's experience in configuring meters with the AIMSPRO tool, ACE Pilot is the new configuration and reading SW proposed by Itron. ACEPilot is compatible with current operating system versions available on the market.

ACE Pilot is designed with the most advanced technology and uses a user-friendly graphical interface, streamlining the configuration and maintenance of meters.

New functions include self-detection of meters, resolution of programming inconsistencies, troubleshooting, user simplifications, and multilingual support.

Applications

Configuration

ACEPilot enables the configuration and programming of Itron meters.

Configuration management

ACE PILOT makes it easy to control and manage the configurations of your meter fleet.

Monitoring and meter reading

ACE PILOT allows reading Meter data as well as enabling diagnostics during maintenance processes.

Features & Benefits

- " Reusable configurations for meter groups.
- " Fully supports the activation (commissioning) phase for C&I and T&D meters.
- " Utilities Management

Commissioning tool

ACEPilot can be used to verify the correct parameters at the meter installation stage, being able to export data and graphical reports with the Toolbox function.

technical specifications

Administration

- " Various types of communication (PSTN, GSM, GPRS, TCP-IP, optical probe)
- " Configuring Users under Various Profiles
- " Compatible with Windows XP SP2+, Vista, 7, 8, 10, Server 2003, Server 2008
- " Software licenses associated with the PC

Measurement Points

- " Manages all Itron DLMS meters.
 - ACE4000
 - ACE6000
 - ACE SL7000
 - ACE8000
- " Import counters function from AIMS-Pro

Configuration

- " Creation / Editing
- " Copy / Paste / Print
- " Pricing with graphical interface
- " Filters by favorites
- " Import configurations from AIMS-Pro

Point-to-point meter management

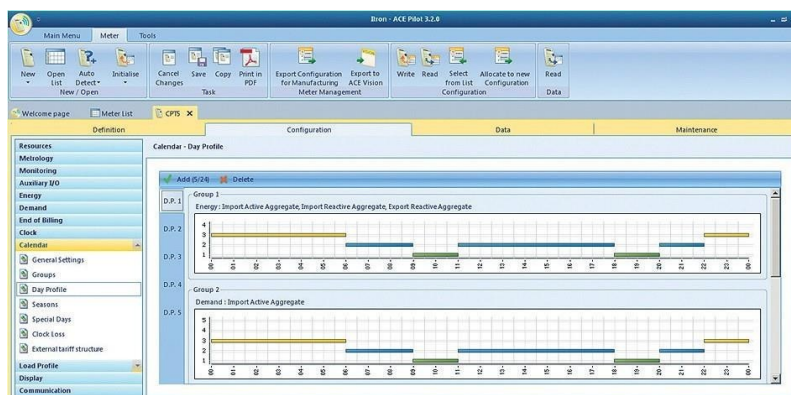
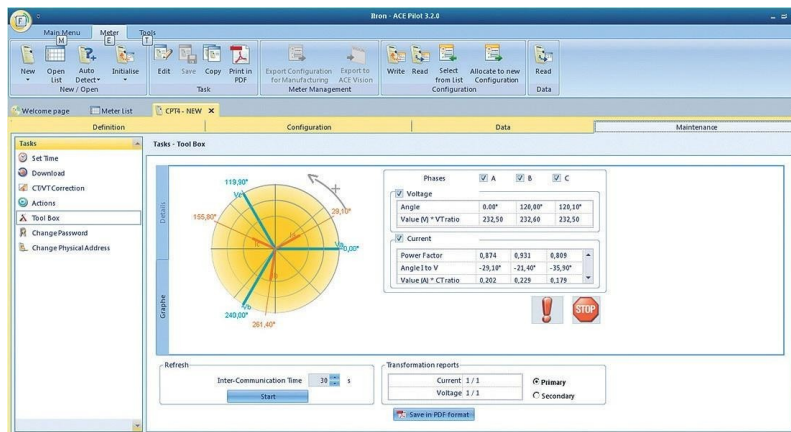
- " Writing configuration on meters
- " Reading of all meter data.
- " Exporting Data to EXCEL
- " Firmware download (on request)

Maintenance Tool

- " Graphic tool box
- " Saving data in PDF format

Availability

- " Read only version
- " Reading and Programming Version (Full)



The screenshot shows the 'Meters' list window. It contains a table with the following columns: Name, Serial Number, Meter Type, Firmware Version, Group, Client, and Last Save. The table lists various meters with their respective details.

Name	Serial Number	Meter Type	Firmware Version	Group	Client	Last Save
51025722	51025722	SL7000 761	5.35	KoDiK		22/02/2011 10:37
51025723	51025723	SL7000 761	5.35	KoDiK		22/02/2011 10:37
55027339	55027339	ACE6000 661	2.21			28/12/2011 11:50
55029691	55029691	ACE6000 661	2.21			21/12/2011 08:59
55033937	55033937	ACE6000 661	2.21			04/01/2012 11:31
6612451ure	55050179	ACE6000 661	2.65			06/12/2011 17:30
ACE6000 - Indonesia - 1	55016694	ACE6000 661	2.21			05/07/2011 05:46
ACE6000 - ENWP - Indones...	55022917	ACE6000 661	2.21			05/07/2011 05:50
ACE6000 - ENWP in Lamp...	55022927	ACE6000 661	2.21			05/07/2011 06:05
ACE6000 Energy ICT - SMS	55017162	ACE6000 661	2.21			24/03/2011 16:34
ACE6000 TEST	55029821	ACE6000 661	1.86			21/04/2011 11:55
ACE6000-1 - FEWA - Olig...	A2001012	ACE6000 661	2.21			21/10/2009 11:59
ACE6000-1 - FEWA - Tests	A2001012	ACE6000 661	2.21			06/08/2011 16:37
ACE650_SEC_124_MAX	12345678	ACE6000 650	1.24			15/01/2009 10:32
ACE650_SEC_124_MIN	12345678	ACE6000 650	1.24			15/01/2009 10:31
ACE661 - Far Net	55029821	ACE6000 661	1.86			21/10/2009 16:31
ACE6K - Ethernet	55031382	ACE6000 661	1.86			13/01/2012 15:17
ACE6K - Ethernet - Media...	55031382	ACE6000 661	2.21			28/10/2011 10:51
ACE6K - JAMP	55094469	ACE6000 661	1.86			01/11/2011 22:40
ACE6K - ROMANIA	55033497	ACE6000 661	2.21			22/09/2011 11:40
ACE6K - Tuning	55031382	ACE6000 661	2.21			21/10/2009 16:31
ACE6K DUBAI	55014964	ACE6000 661	1.86			28/11/2011 14:17
ACE6K Greece	55501933	ACE6000 661	2.65			07/12/2011 18:27
ACE6K TRCN - CRA room...	55017344	ACE6000 661	7.71			27/03/2011 20:48



Our company is the world's leading provider of smart metering, data collection and utility software systems, with over 8,000 utilities worldwide relying on our technology to optimize the delivery and use of energy and water.

To realize your smarter energy and water future, start here: www.itron.com

Per ulteriori informazioni contattare il Vs. Rivenditore locale (Sales Area Italia - Svizzera italiana):



INTEGRAS R. L.
Via Lecco, 5/E - 22036 - Erba (CO) - ITALY
Tel: 031 - 333.88.84 - Fax: 031 - 333.49.34
Mail to: info@integra.co.it
Website: www.integra.co.it

itron

1, Avenue des Temps Modernes
86361 Chasseneuil du Poitou cedex
France

phone: +33 5 49 62 70 00
Fax: +33 5 49 62 70 89